

Global Edge® 2017 – Automated Manufacturing
The Power to Succeed in a Global Market



User Guide

Confidential

Table of Contents

3.00: Global Edge User Guide Outline

The following outlines the user operation steps of the *Global Edge 2017 – Automated Manufacturing* software:

3.01: Global Edge Software User Guide Outline

3.01.00: Global Edge Software User Guide Outline (refer to Page 3)

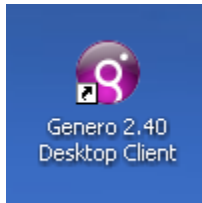
3.02: Global Edge System Start-Up / Login

3.02.01: Login to System (refer to Page 4)

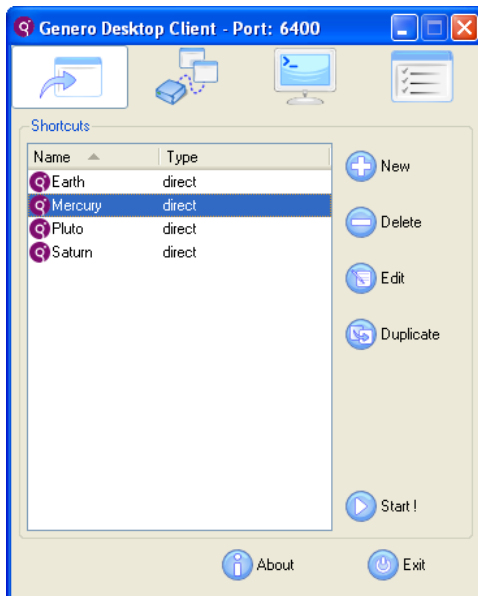
3.02: Global Edge System Start-Up / Login

3.02.01: Login to System

1. The first step to Login to the **Global Edge** system is to double click on the following Desktop Icon:



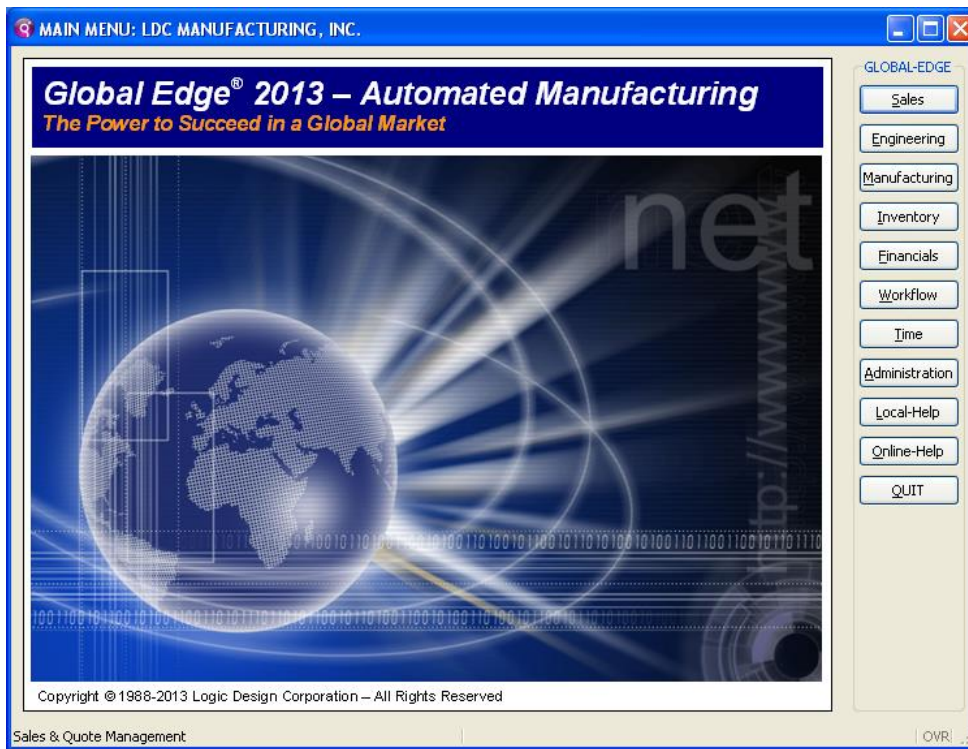
2. Highlight the name of the Server to access on the Genero Desktop Client screen, then select the “Start” option:



3. Enter “**User name**”, then TAB to “**Password**” Field and enter Password, then select “**OK**” option:



4. The *Global Edge* system will display the Main System Menu:



5. Return to the Desktop and Double Click on the *Global Edge Document Control* Icon to start up on the *Global Edge Document Control* software:



The *Global Edge Document Control* software contains functionality to import DXF Drawings Files (Attribute Information) into the *Global Edge* system.

6. After Double Clicking the **Global Edge Document Control** Icon to start up on the **Global Edge Document Control** software, the following screen form is displayed:

